



FARNES DRIVE, GIDEA PARK

Beautifully Presented Three-Bedroom Semi-Detached Home | Open Plan Lounge/Diner | Kitchen | Bathroom | Separate W.C. | Close To Shops And Amenities | Walking Distance to Gidea Park Railway Station | Off-Street Parking | Internal Viewing Highly Recommended |

Guide Price £500,000 Freehold | 3 bedroom semi-detached house for sale

CHARLES STRATTON
ESTATE AGENTS



Tenure: Freehold

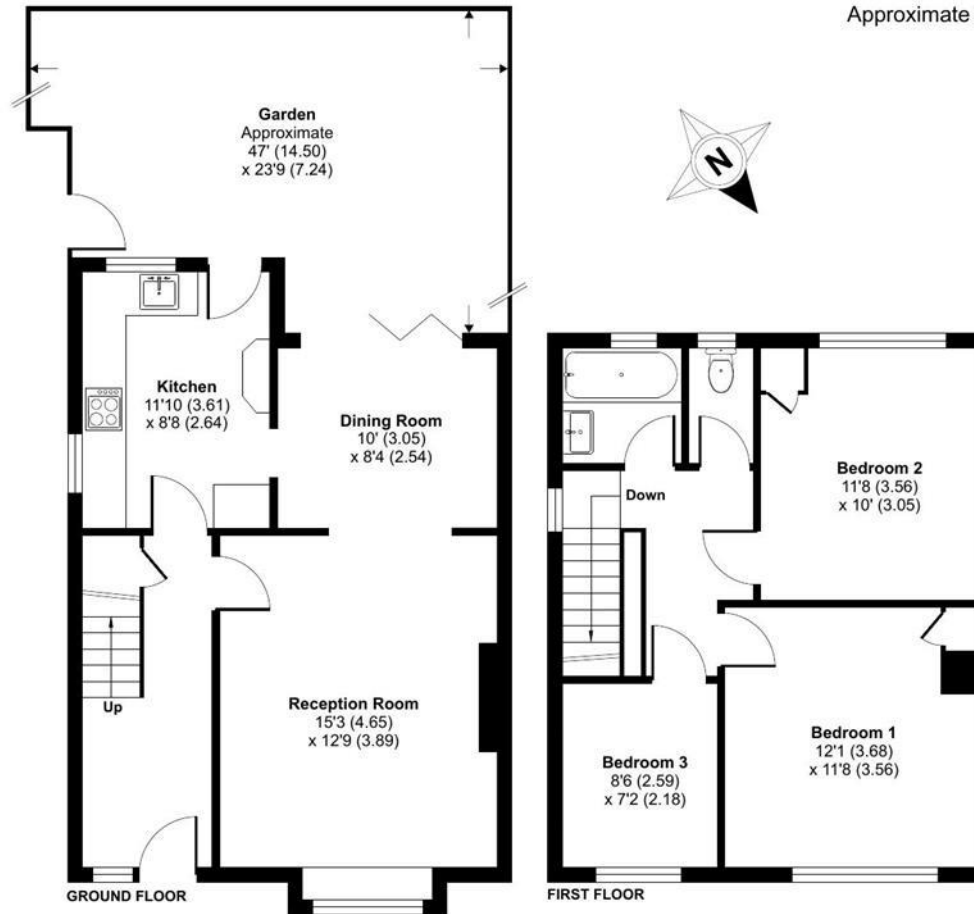




Farnes Drive, Romford, Gidea Park

Approximate Area = 962 sq ft / 89.3 sq m

For identification only - Not to scale



Floor plan produced in accordance with RICS Property Measurement Standards incorporating International Property Measurement Standards (IPMS2 Residential). © nrlchem 2024. Produced for Charles Stratton Estates Ltd. REF: 1193164

Energy Efficiency Rating		Environmental Impact (CO ₂) Rating	
Current	Potential	Current	Potential
Very energy efficient - lower running costs		Very environmentally friendly - lower CO ₂ emissions	
92-100 A		92-100 A	
81-91 B		81-91 B	89
69-80 C		69-80 C	
55-68 D	65	55-68 D	
39-54 E		39-54 E	
21-38 F		21-38 F	
1-20 G		1-20 G	
Not energy efficient - higher running costs		Not environmentally friendly - higher CO ₂ emissions	
England & Wales	EU Directive 2002/91/EC	England & Wales	EU Directive 2002/91/EC

The energy efficiency rating is a measure of the overall efficiency of a home. The higher the rating the more energy efficient the home is and the lower the fuel bills will be.

The environmental impact rating is a measure of a home's impact on the environment in terms of carbon dioxide (CO₂).

Viewing by appointment only
Charles Stratton Estates Ltd

192 Main Road, Gidea Park, Romford RM2 5HA

Tel: 01708 726 817 Email: sales@charlesstratton.co.uk Website: www.charlesstratton.co.uk/

Whilst every effort is made to ensure the accuracy of these details, it should be noted that the measurements are approximate only. Floorplans are for representation purposes only and prepared according to the RICS Code of Measuring Practice by our floorplan provider. Therefore, the layout of doors, windows and rooms are approximate and should be regarded as such by any prospective purchaser. Any internal photographs are intended as a guide only and it should not be assumed that any of the furniture/fittings are included in any sale. Where shown, details of lease, ground rent and service charge are provided by the vendor and their accuracy cannot be guaranteed, as the information may not have been verified and further checks should be made either through your solicitor/conveyance. Where appliances, including central heating, are mentioned, it cannot be assumed that they are in working order, as they have not been tested. Please also note that wiring, plumbing and drains have not been checked.